

Vision Problems in the U.S.

Prevalence of Adult Vision Impairment and Age-Related Eye Disease in America



2008 Update to the Fourth Edition

Refractive Error

Refractive errors are the most frequent eye problems in the United States. They are optical defects that result in light not being properly focused on the eye's retina.

Nearsightedness (myopia) and farsightedness (hyperopia) are the most common refractive errors. People with myopia see near objects clearly, while distant ones are blurred. People with hyperopia experience just the opposite—distant objects are clear while near ones are blurred.

Why refractive errors develop is uncertain. Most infants have some degree of hyperopia, but vision becomes more normal with age, usually leveling off by age 6. However, some children remain farsighted or become so later in life. While some children may be nearsighted early in life, most myopia occurs later during adolescence. Refractive error can continue to change over our lifetime.

Other common refractive errors include astigmatism (uneven focus) and presbyopia (age-related problem with near focus). Fortunately, almost all refractive errors can be corrected by eyeglasses or contact lenses. It is estimated that more than 150 million Americans use corrective eyewear to compensate for their refractive error. Americans are estimated to spend over \$15 billion each year on eyewear, supporting an optical industry in the U.S. worth more than \$30 billion.

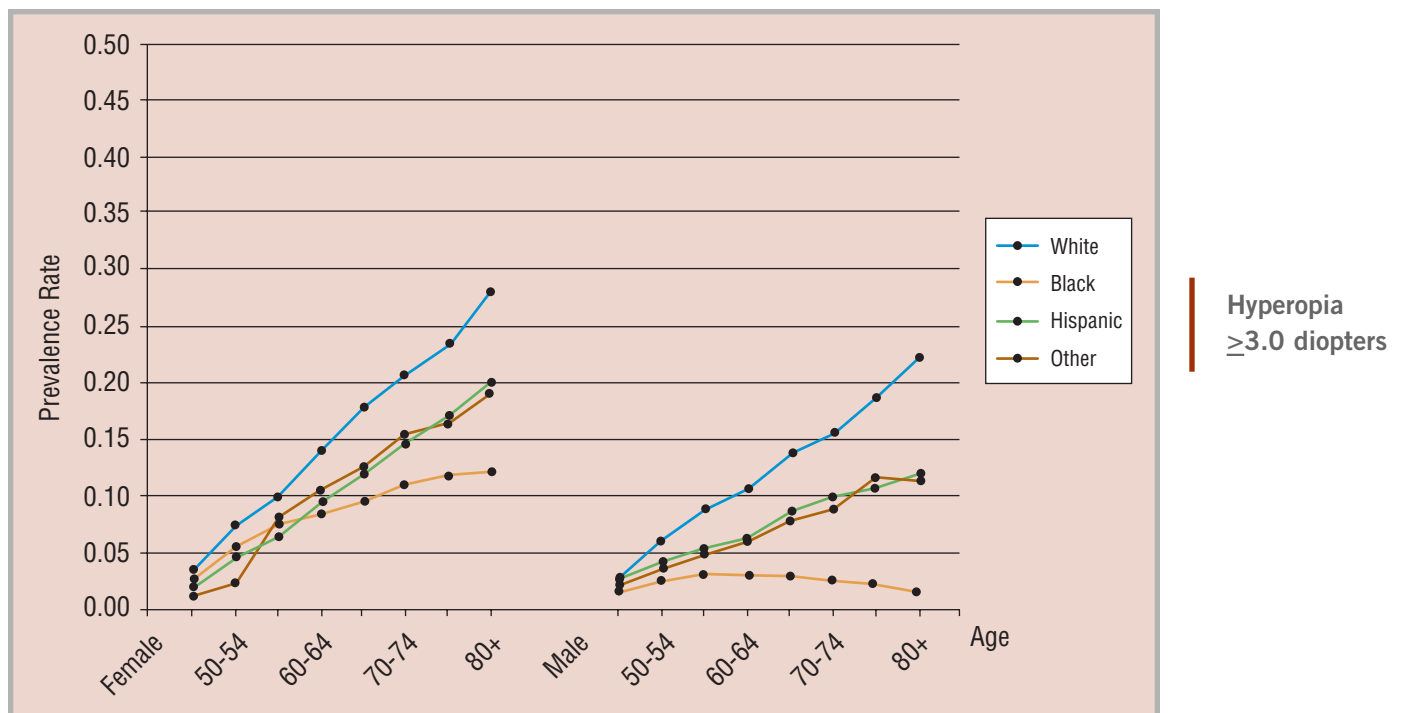
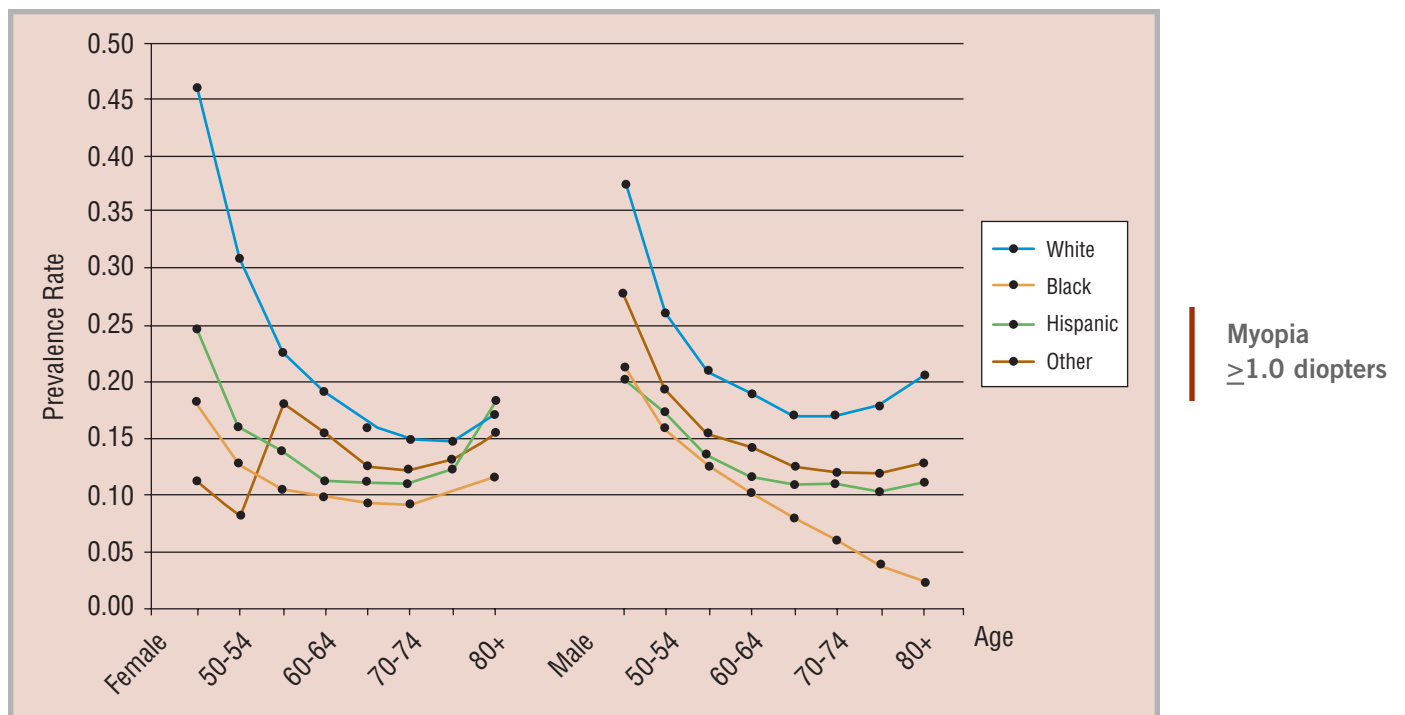
Refractive surgery is now another alternative for correcting problems such as myopia, hyperopia and astigmatism. The number of people seeking refractive surgery is increasing. However, the surgical procedures are not without some risk and the long-term effects of many of these procedures are still unknown.

Uncorrected or under-corrected refractive error can result in significant vision impairment. The magnitude of refractive error is measured in units called diopters. For each diopter of refractive error, a person may be unable to read the next smaller line of an eye chart. For instance, a person with more than two diopters of hyperopia might find it difficult to read this text.

Cases of refractive error described in the following charts include myopia of 1.0 diopters or more. The threshold for clinically significant hyperopia is somewhat higher at 3.0 diopters or more.

Myopia is a very common disorder affecting more than 32 million Americans age 40 and older. Prevalence is greater in women through age 60 when rates become more comparable between genders (see chart below). Myopia affects more Whites than other races, and is generally less frequent with age. Because of the higher threshold for significance, hyperopia is less common, affecting over 12 million older Americans. Prevalence of hyperopia generally increases with age (see chart below). It is most frequent in Whites, but also affects Hispanics more often than Blacks.

Estimated Specific Prevalence Rates for Myopia and Hyperopia



Estimated Number of Cases of Myopia (≥ 1.00 diopters or worse) in the U.S. Population Age 40 and Older by State, Race and Sex

| State | Total | Female | Male | White | Black | Hispanic | Other |
|----------------------|------------|------------|------------|------------|-----------|-----------|---------|
| Total U.S. | 32,608,376 | 17,652,359 | 14,956,017 | 27,532,387 | 2,008,214 | 2,079,427 | 988,348 |
| Alabama | 505,517 | 275,958 | 229,559 | 430,565 | 66,677 | 4,177 | 4,098 |
| Alaska | 72,139 | 36,393 | 35,746 | 61,407 | 1,193 | 1,472 | 8,067 |
| Arizona | 591,950 | 317,168 | 274,782 | 490,430 | 9,846 | 71,122 | 20,553 |
| Arkansas | 317,674 | 173,015 | 144,659 | 287,382 | 22,817 | 4,627 | 2,849 |
| California | 3,438,248 | 1,814,445 | 1,623,803 | 2,370,236 | 136,520 | 606,101 | 325,391 |
| Colorado | 512,365 | 276,035 | 236,330 | 452,079 | 9,863 | 41,284 | 9,138 |
| Connecticut | 439,011 | 241,622 | 197,389 | 394,890 | 18,035 | 19,059 | 7,027 |
| Delaware | 95,500 | 51,912 | 43,587 | 82,640 | 9,385 | 1,948 | 1,526 |
| District of Columbia | 42,976 | 22,742 | 20,234 | 18,949 | 20,555 | 2,473 | 998 |
| Florida | 2,002,312 | 1,081,022 | 921,290 | 1,615,201 | 136,585 | 221,996 | 28,530 |
| Georgia | 870,225 | 469,242 | 400,982 | 698,544 | 135,009 | 21,474 | 15,197 |
| Hawaii | 115,585 | 55,393 | 60,192 | 47,352 | 1,239 | 4,481 | 62,512 |
| Idaho | 161,387 | 86,730 | 74,657 | 154,105 | 300 | 4,968 | 2,014 |
| Illinois | 1,378,992 | 750,157 | 628,835 | 1,163,275 | 103,288 | 78,836 | 33,592 |
| Indiana | 736,788 | 402,747 | 334,041 | 691,603 | 28,608 | 11,240 | 5,336 |
| Iowa | 379,414 | 206,910 | 172,504 | 369,599 | 3,131 | 4,097 | 2,587 |
| Kansas | 324,246 | 176,096 | 148,150 | 301,901 | 8,468 | 9,150 | 4,727 |
| Kentucky | 511,413 | 281,473 | 229,940 | 487,930 | 17,279 | 3,292 | 2,913 |
| Louisiana | 465,249 | 252,691 | 212,558 | 373,070 | 78,711 | 7,791 | 5,676 |
| Maine | 186,587 | 102,607 | 83,980 | 184,349 | 435 | 651 | 1,152 |
| Maryland | 601,752 | 326,642 | 275,110 | 472,990 | 94,657 | 15,059 | 19,047 |
| Massachusetts | 791,817 | 436,899 | 354,918 | 731,395 | 20,336 | 23,236 | 16,850 |
| Michigan | 1,190,884 | 646,534 | 544,350 | 1,079,221 | 78,457 | 16,904 | 16,303 |
| Minnesota | 631,915 | 341,034 | 290,881 | 605,671 | 8,939 | 6,713 | 10,592 |
| Mississippi | 292,561 | 159,141 | 133,420 | 232,427 | 55,650 | 2,422 | 2,063 |
| Missouri | 695,285 | 380,339 | 314,946 | 646,180 | 35,774 | 6,767 | 6,564 |
| Montana | 124,378 | 66,766 | 57,612 | 119,512 | 169 | 1,118 | 3,578 |
| Nebraska | 210,209 | 114,285 | 95,924 | 199,877 | 3,602 | 4,663 | 2,068 |
| Nevada | 245,124 | 126,487 | 118,637 | 201,673 | 9,150 | 22,699 | 11,603 |
| New Hampshire | 177,549 | 96,715 | 80,834 | 174,200 | 597 | 1,294 | 1,458 |
| New Jersey | 993,452 | 540,920 | 452,532 | 810,526 | 66,796 | 75,181 | 40,949 |
| New Mexico | 193,573 | 104,499 | 89,073 | 127,580 | 2,133 | 52,831 | 11,028 |
| New York | 2,101,397 | 1,147,008 | 954,388 | 1,657,410 | 171,404 | 182,681 | 89,902 |
| North Carolina | 924,549 | 504,299 | 420,250 | 788,960 | 103,593 | 17,294 | 14,703 |
| North Dakota | 81,554 | 43,824 | 37,730 | 79,270 | 157 | 360 | 1,767 |
| Ohio | 1,395,794 | 766,153 | 629,641 | 1,295,715 | 75,922 | 12,348 | 11,809 |
| Oklahoma | 404,187 | 218,053 | 186,134 | 359,681 | 14,337 | 9,124 | 21,045 |
| Oregon | 438,169 | 236,951 | 201,218 | 411,170 | 3,415 | 12,565 | 11,020 |
| Pennsylvania | 1,575,622 | 865,361 | 710,261 | 1,463,495 | 71,825 | 23,007 | 17,296 |
| Rhode Island | 134,456 | 74,641 | 59,815 | 124,672 | 2,780 | 5,185 | 1,820 |
| South Carolina | 453,014 | 246,929 | 206,084 | 374,319 | 69,595 | 5,258 | 3,842 |
| South Dakota | 95,071 | 50,849 | 44,223 | 91,133 | 247 | 608 | 3,083 |
| Tennessee | 692,533 | 379,230 | 313,303 | 626,735 | 53,582 | 6,706 | 5,511 |
| Texas | 2,129,114 | 1,144,850 | 984,264 | 1,547,745 | 138,996 | 391,945 | 50,427 |
| Utah | 218,186 | 117,254 | 100,932 | 203,312 | 859 | 9,595 | 4,419 |
| Vermont | 87,758 | 48,122 | 39,636 | 86,639 | 205 | 386 | 528 |
| Virginia | 837,108 | 453,672 | 383,436 | 708,291 | 86,198 | 19,767 | 22,852 |
| Washington | 739,909 | 396,207 | 343,702 | 673,657 | 11,966 | 21,117 | 33,168 |
| West Virginia | 244,902 | 134,343 | 110,559 | 239,313 | 3,685 | 883 | 1,022 |
| Wisconsin | 692,795 | 374,524 | 318,271 | 660,853 | 15,041 | 9,593 | 7,308 |
| Wyoming | 66,183 | 35,468 | 30,715 | 63,260 | 205 | 1,882 | 837 |

| White Female | White Male | Black Female | Black Male | Hisp. Female | Hisp. Male | Other Female | Other Male | State |
|--------------|------------|--------------|------------|--------------|------------|--------------|------------|----------------------|
| 15,068,869 | 12,463,518 | 1,057,451 | 950,763 | 1,114,406 | 965,021 | 411,633 | 576,715 | Total U.S. |
| 236,121 | 194,444 | 36,078 | 30,599 | 2,035 | 2,142 | 1,723 | 2,375 | Alabama |
| 31,830 | 29,577 | 528 | 665 | 757 | 715 | 3,278 | 4,788 | Alaska |
| 266,174 | 224,256 | 4,499 | 5,346 | 37,656 | 33,466 | 8,839 | 11,714 | Arizona |
| 157,478 | 129,903 | 12,130 | 10,687 | 2,222 | 2,405 | 1,185 | 1,663 | Arkansas |
| 1,280,662 | 1,089,574 | 68,712 | 67,808 | 326,208 | 279,892 | 138,862 | 186,529 | California |
| 246,136 | 205,943 | 4,449 | 5,414 | 21,597 | 19,687 | 3,853 | 5,285 | Colorado |
| 218,705 | 176,185 | 9,605 | 8,430 | 10,633 | 8,426 | 2,679 | 4,348 | Connecticut |
| 45,362 | 37,278 | 4,939 | 4,446 | 987 | 960 | 624 | 903 | Delaware |
| 9,565 | 9,384 | 11,424 | 9,131 | 1,306 | 1,167 | 447 | 551 | District of Columbia |
| 875,683 | 739,518 | 70,522 | 66,063 | 122,668 | 99,328 | 12,149 | 16,381 | Florida |
| 382,358 | 316,186 | 71,021 | 63,989 | 9,888 | 11,586 | 5,976 | 9,222 | Georgia |
| 24,380 | 22,972 | 443 | 796 | 2,457 | 2,025 | 28,113 | 34,399 | Hawaii |
| 83,326 | 70,779 | 108 | 193 | 2,442 | 2,525 | 854 | 1,160 | Idaho |
| 640,138 | 523,137 | 56,076 | 47,212 | 40,152 | 38,683 | 13,790 | 19,802 | Illinois |
| 380,003 | 311,600 | 15,031 | 13,576 | 5,573 | 5,667 | 2,140 | 3,197 | Indiana |
| 202,385 | 167,214 | 1,444 | 1,687 | 2,026 | 2,071 | 1,055 | 1,532 | Iowa |
| 165,401 | 136,499 | 4,188 | 4,280 | 4,595 | 4,555 | 1,912 | 2,815 | Kansas |
| 269,853 | 218,077 | 8,925 | 8,354 | 1,539 | 1,753 | 1,157 | 1,755 | Kentucky |
| 204,229 | 168,841 | 42,049 | 36,662 | 4,168 | 3,623 | 2,245 | 3,431 | Louisiana |
| 101,609 | 82,740 | 163 | 272 | 352 | 298 | 482 | 671 | Maine |
| 260,124 | 212,866 | 50,475 | 44,182 | 8,143 | 6,916 | 7,901 | 11,146 | Maryland |
| 406,917 | 324,477 | 10,356 | 9,980 | 13,104 | 10,132 | 6,521 | 10,328 | Massachusetts |
| 589,587 | 489,633 | 41,896 | 36,561 | 8,690 | 8,213 | 6,360 | 9,943 | Michigan |
| 329,709 | 275,962 | 3,916 | 5,023 | 3,251 | 3,462 | 4,158 | 6,434 | Minnesota |
| 127,365 | 105,062 | 29,748 | 25,902 | 1,146 | 1,276 | 882 | 1,180 | Mississippi |
| 354,909 | 291,271 | 19,205 | 16,569 | 3,503 | 3,264 | 2,722 | 3,843 | Missouri |
| 64,615 | 54,897 | 59 | 110 | 616 | 502 | 1,475 | 2,103 | Montana |
| 109,333 | 90,543 | 1,785 | 1,817 | 2,288 | 2,374 | 878 | 1,190 | Nebraska |
| 105,441 | 96,231 | 4,377 | 4,773 | 11,490 | 11,209 | 5,179 | 6,424 | Nevada |
| 95,197 | 79,003 | 243 | 354 | 704 | 590 | 571 | 887 | New Hampshire |
| 448,116 | 362,410 | 35,761 | 31,035 | 41,068 | 34,113 | 15,974 | 24,975 | New Jersey |
| 69,973 | 57,607 | 932 | 1,201 | 28,833 | 23,998 | 4,761 | 6,267 | New Mexico |
| 914,246 | 743,164 | 94,094 | 77,310 | 103,534 | 79,147 | 35,135 | 54,768 | New York |
| 435,095 | 353,865 | 55,323 | 48,270 | 7,821 | 9,473 | 6,061 | 8,642 | North Carolina |
| 42,842 | 36,428 | 51 | 106 | 192 | 168 | 739 | 1,028 | North Dakota |
| 714,381 | 581,333 | 40,455 | 35,467 | 6,523 | 5,825 | 4,793 | 7,016 | Ohio |
| 197,347 | 162,333 | 7,254 | 7,083 | 4,514 | 4,610 | 8,938 | 12,108 | Oklahoma |
| 224,767 | 186,402 | 1,495 | 1,920 | 6,087 | 6,478 | 4,601 | 6,419 | Oregon |
| 807,326 | 656,169 | 38,785 | 33,040 | 12,335 | 10,672 | 6,916 | 10,380 | Pennsylvania |
| 69,633 | 55,039 | 1,346 | 1,434 | 2,943 | 2,242 | 719 | 1,101 | Rhode Island |
| 205,492 | 168,828 | 37,338 | 32,256 | 2,457 | 2,801 | 1,643 | 2,199 | South Carolina |
| 49,193 | 41,940 | 74 | 173 | 304 | 304 | 1,278 | 1,805 | South Dakota |
| 345,318 | 281,417 | 28,565 | 25,016 | 3,117 | 3,589 | 2,230 | 3,281 | Tennessee |
| 843,518 | 704,227 | 71,223 | 67,774 | 210,125 | 181,820 | 19,984 | 30,444 | Texas |
| 110,247 | 93,065 | 318 | 541 | 4,877 | 4,717 | 1,811 | 2,608 | Utah |
| 47,611 | 39,029 | 82 | 122 | 209 | 177 | 220 | 308 | Vermont |
| 388,435 | 319,856 | 45,083 | 41,115 | 10,469 | 9,298 | 9,685 | 13,168 | Virginia |
| 366,064 | 307,593 | 5,119 | 6,847 | 10,609 | 10,508 | 14,414 | 18,754 | Washington |
| 131,583 | 107,730 | 1,872 | 1,812 | 460 | 423 | 428 | 594 | West Virginia |
| 359,036 | 301,817 | 7,804 | 7,236 | 4,751 | 4,842 | 2,932 | 4,376 | Wisconsin |
| 34,046 | 29,214 | 82 | 123 | 979 | 903 | 361 | 476 | Wyoming |

Estimated Number of Cases of Hyperopia (≥ 3.00 diopters or worse) in the U.S. Population Age 40 and Older by State, Race and Sex

| State | Total | Female | Male | White | Black | Hispanic | Other |
|----------------------|------------|-----------|-----------|------------|---------|----------|---------|
| Total U.S. | 12,703,454 | 7,670,199 | 5,033,255 | 10,937,951 | 673,322 | 719,458 | 372,723 |
| Alabama | 199,887 | 123,605 | 76,282 | 173,697 | 23,401 | 1,380 | 1,409 |
| Alaska | 20,607 | 11,043 | 9,563 | 17,060 | 303 | 403 | 2,841 |
| Arizona | 247,411 | 145,198 | 102,213 | 212,959 | 2,937 | 23,928 | 7,587 |
| Arkansas | 130,020 | 78,900 | 51,121 | 119,856 | 7,795 | 1,372 | 997 |
| California | 1,322,770 | 786,575 | 536,195 | 944,129 | 44,613 | 203,756 | 130,272 |
| Colorado | 177,298 | 103,586 | 73,712 | 157,028 | 2,878 | 14,188 | 3,204 |
| Connecticut | 172,010 | 105,071 | 66,939 | 157,678 | 5,979 | 6,071 | 2,281 |
| Delaware | 37,614 | 22,762 | 14,852 | 33,441 | 3,029 | 603 | 542 |
| District of Columbia | 16,905 | 11,375 | 5,530 | 7,408 | 8,257 | 838 | 401 |
| Florida | 908,946 | 546,296 | 362,650 | 763,370 | 44,326 | 90,920 | 10,330 |
| Georgia | 308,334 | 188,645 | 119,689 | 255,059 | 42,380 | 6,026 | 4,869 |
| Hawaii | 49,355 | 29,301 | 20,054 | 17,370 | 290 | 1,488 | 30,207 |
| Idaho | 60,384 | 34,866 | 25,518 | 58,116 | 72 | 1,456 | 741 |
| Illinois | 532,099 | 325,586 | 206,513 | 458,797 | 35,997 | 24,881 | 12,424 |
| Indiana | 281,099 | 170,334 | 110,765 | 266,038 | 9,693 | 3,584 | 1,785 |
| Iowa | 154,174 | 92,862 | 61,311 | 151,156 | 936 | 1,230 | 851 |
| Kansas | 126,932 | 76,022 | 50,910 | 119,700 | 2,709 | 2,917 | 1,607 |
| Kentucky | 192,612 | 116,277 | 76,335 | 184,872 | 5,740 | 1,039 | 961 |
| Louisiana | 176,930 | 109,761 | 67,169 | 144,991 | 26,899 | 3,033 | 2,006 |
| Maine | 71,490 | 42,443 | 29,047 | 70,790 | 109 | 216 | 375 |
| Maryland | 223,414 | 137,460 | 85,954 | 180,931 | 30,831 | 4,724 | 6,928 |
| Massachusetts | 309,967 | 189,215 | 120,752 | 290,444 | 6,495 | 7,236 | 5,792 |
| Michigan | 450,243 | 272,218 | 178,025 | 412,162 | 26,986 | 5,621 | 5,474 |
| Minnesota | 232,938 | 137,768 | 95,170 | 225,335 | 2,236 | 1,902 | 3,465 |
| Mississippi | 114,690 | 71,730 | 42,960 | 94,285 | 18,839 | 829 | 736 |
| Missouri | 271,441 | 164,461 | 106,980 | 254,638 | 12,206 | 2,242 | 2,354 |
| Montana | 47,597 | 27,486 | 20,111 | 45,949 | 45 | 372 | 1,231 |
| Nebraska | 83,166 | 49,814 | 33,352 | 79,928 | 1,126 | 1,394 | 718 |
| Nevada | 93,718 | 53,144 | 40,574 | 79,080 | 2,952 | 7,129 | 4,557 |
| New Hampshire | 62,632 | 36,676 | 25,956 | 61,618 | 154 | 391 | 469 |
| New Jersey | 391,019 | 239,886 | 151,133 | 328,539 | 22,907 | 25,672 | 13,901 |
| New Mexico | 77,836 | 45,980 | 31,856 | 52,498 | 666 | 20,625 | 4,048 |
| New York | 844,410 | 521,465 | 322,945 | 684,154 | 60,995 | 66,951 | 32,311 |
| North Carolina | 356,396 | 218,994 | 137,402 | 311,019 | 35,626 | 4,668 | 5,083 |
| North Dakota | 33,102 | 19,677 | 13,424 | 32,370 | 31 | 117 | 584 |
| Ohio | 541,969 | 330,788 | 211,181 | 507,147 | 26,516 | 4,188 | 4,118 |
| Oklahoma | 161,907 | 97,031 | 64,876 | 146,344 | 4,634 | 2,759 | 8,170 |
| Oregon | 171,292 | 100,812 | 70,480 | 162,619 | 1,006 | 3,675 | 3,992 |
| Pennsylvania | 652,326 | 400,458 | 251,868 | 613,065 | 25,698 | 7,479 | 6,084 |
| Rhode Island | 54,213 | 33,313 | 20,900 | 51,128 | 840 | 1,607 | 637 |
| South Carolina | 176,356 | 108,915 | 67,441 | 149,258 | 24,163 | 1,596 | 1,339 |
| South Dakota | 38,500 | 22,782 | 15,718 | 37,194 | 55 | 196 | 1,056 |
| Tennessee | 265,048 | 161,233 | 103,815 | 243,527 | 17,684 | 2,005 | 1,832 |
| Texas | 786,618 | 469,514 | 317,105 | 588,039 | 43,998 | 137,686 | 16,895 |
| Utah | 78,520 | 45,464 | 33,056 | 73,792 | 217 | 2,965 | 1,546 |
| Vermont | 32,116 | 18,845 | 13,271 | 31,747 | 52 | 144 | 174 |
| Virginia | 307,137 | 185,937 | 121,200 | 264,570 | 28,760 | 5,788 | 8,019 |
| Washington | 270,756 | 158,266 | 112,490 | 248,931 | 3,255 | 6,211 | 12,359 |
| West Virginia | 99,572 | 59,625 | 39,948 | 97,476 | 1,343 | 357 | 397 |
| Wisconsin | 263,629 | 156,967 | 106,662 | 253,626 | 4,603 | 2,932 | 2,467 |
| Wyoming | 24,052 | 13,769 | 10,283 | 23,027 | 60 | 668 | 296 |

| White Female | White Male | Black Female | Black Male | Hisp. Female | Hisp. Male | Other Female | Other Male | State |
|--------------|------------|--------------|------------|--------------|------------|--------------|------------|----------------------|
| 6,532,088 | 4,405,862 | 501,824 | 171,497 | 422,199 | 297,259 | 214,087 | 158,636 | Total U.S. |
| 104,315 | 69,382 | 17,741 | 5,660 | 750 | 630 | 799 | 610 | Alabama |
| 9,028 | 8,032 | 196 | 107 | 217 | 186 | 1,603 | 1,238 | Alaska |
| 124,960 | 87,998 | 2,016 | 921 | 13,759 | 10,169 | 4,463 | 3,124 | Arizona |
| 71,766 | 48,090 | 5,855 | 1,940 | 714 | 658 | 564 | 433 | Arkansas |
| 558,370 | 385,759 | 32,472 | 12,140 | 119,489 | 84,266 | 76,243 | 54,029 | California |
| 91,675 | 65,353 | 1,964 | 914 | 8,087 | 6,101 | 1,860 | 1,345 | Colorado |
| 95,765 | 61,913 | 4,469 | 1,510 | 3,618 | 2,453 | 1,219 | 1,062 | Connecticut |
| 19,896 | 13,545 | 2,232 | 797 | 331 | 271 | 303 | 239 | Delaware |
| 4,190 | 3,218 | 6,436 | 1,822 | 505 | 333 | 244 | 157 | District of Columbia |
| 452,239 | 311,130 | 32,482 | 11,844 | 55,658 | 35,262 | 5,916 | 4,414 | Florida |
| 151,606 | 103,453 | 31,359 | 11,022 | 3,066 | 2,961 | 2,615 | 2,254 | Georgia |
| 9,632 | 7,738 | 166 | 125 | 874 | 614 | 18,629 | 11,578 | Hawaii |
| 33,642 | 24,473 | 41 | 30 | 756 | 700 | 427 | 314 | Idaho |
| 277,643 | 181,155 | 27,257 | 8,740 | 13,684 | 11,197 | 7,002 | 5,422 | Illinois |
| 160,204 | 105,834 | 7,217 | 2,476 | 1,927 | 1,657 | 987 | 798 | Indiana |
| 91,081 | 60,075 | 649 | 288 | 659 | 572 | 474 | 377 | Iowa |
| 71,570 | 48,130 | 1,962 | 747 | 1,600 | 1,317 | 890 | 717 | Kansas |
| 110,947 | 73,925 | 4,250 | 1,490 | 546 | 494 | 534 | 427 | Kentucky |
| 86,681 | 58,310 | 20,152 | 6,747 | 1,839 | 1,194 | 1,089 | 917 | Louisiana |
| 42,036 | 28,754 | 66 | 43 | 128 | 88 | 213 | 161 | Maine |
| 107,885 | 73,047 | 22,890 | 7,940 | 2,807 | 1,917 | 3,878 | 3,050 | Maryland |
| 176,970 | 113,473 | 4,759 | 1,736 | 4,336 | 2,901 | 3,150 | 2,642 | Massachusetts |
| 245,874 | 166,288 | 20,237 | 6,749 | 3,125 | 2,496 | 2,983 | 2,492 | Michigan |
| 133,396 | 91,939 | 1,471 | 765 | 993 | 909 | 1,909 | 1,556 | Minnesota |
| 56,726 | 37,559 | 14,128 | 4,710 | 450 | 380 | 426 | 311 | Mississippi |
| 152,648 | 101,990 | 9,208 | 2,998 | 1,266 | 976 | 1,338 | 1,016 | Missouri |
| 26,540 | 19,409 | 27 | 18 | 218 | 153 | 701 | 530 | Montana |
| 47,860 | 32,068 | 810 | 317 | 729 | 665 | 415 | 303 | Nebraska |
| 44,428 | 34,652 | 2,077 | 875 | 3,918 | 3,211 | 2,722 | 1,836 | Nevada |
| 36,098 | 25,520 | 97 | 57 | 227 | 164 | 254 | 215 | New Hampshire |
| 199,806 | 128,733 | 17,247 | 5,661 | 15,270 | 10,402 | 7,564 | 6,338 | New Jersey |
| 30,895 | 21,602 | 451 | 215 | 12,242 | 8,383 | 2,392 | 1,656 | New Mexico |
| 415,283 | 268,871 | 46,752 | 14,242 | 41,687 | 25,264 | 17,743 | 14,569 | New York |
| 186,998 | 124,021 | 26,805 | 8,820 | 2,298 | 2,370 | 2,892 | 2,191 | North Carolina |
| 19,257 | 13,113 | 16 | 15 | 67 | 50 | 338 | 246 | North Dakota |
| 306,132 | 201,014 | 19,965 | 6,550 | 2,391 | 1,797 | 2,299 | 1,819 | Ohio |
| 87,404 | 58,941 | 3,377 | 1,257 | 1,470 | 1,289 | 4,780 | 3,390 | Oklahoma |
| 95,914 | 66,705 | 678 | 329 | 1,938 | 1,737 | 2,283 | 1,709 | Oregon |
| 373,213 | 239,851 | 19,606 | 6,092 | 4,291 | 3,188 | 3,347 | 2,737 | Pennsylvania |
| 31,394 | 19,734 | 596 | 244 | 974 | 633 | 349 | 289 | Rhode Island |
| 89,130 | 60,128 | 18,176 | 5,987 | 835 | 761 | 774 | 565 | South Carolina |
| 22,033 | 15,160 | 29 | 26 | 109 | 87 | 612 | 444 | South Dakota |
| 145,953 | 97,574 | 13,229 | 4,454 | 1,041 | 964 | 1,009 | 823 | Tennessee |
| 347,295 | 240,744 | 32,193 | 11,805 | 80,802 | 56,884 | 9,223 | 7,671 | Texas |
| 42,823 | 30,969 | 131 | 86 | 1,639 | 1,327 | 872 | 674 | Utah |
| 18,635 | 13,111 | 31 | 20 | 85 | 59 | 93 | 80 | Vermont |
| 156,705 | 107,864 | 21,332 | 7,428 | 3,322 | 2,467 | 4,578 | 3,441 | Virginia |
| 145,520 | 103,411 | 2,128 | 1,127 | 3,315 | 2,896 | 7,304 | 5,055 | Washington |
| 58,189 | 39,286 | 1,005 | 337 | 208 | 149 | 222 | 175 | West Virginia |
| 150,654 | 102,972 | 3,354 | 1,249 | 1,566 | 1,366 | 1,392 | 1,075 | Wisconsin |
| 13,184 | 9,843 | 39 | 22 | 374 | 295 | 173 | 124 | Wyoming |

Acknowledgements

Funding for *Vision Problems in the U.S.* and the 2008 Update to the Fourth Edition, was provided through a subcontract from the National Eye Institute, National Institutes of Health, and the U.S. Department of Health and Human Services.

Research described in this report was conducted by dozens of scientists from all over the world. We gratefully acknowledge the invaluable contribution of data from their work.

Prevalence estimates for *Vision Problems in the U.S.* were created under a grant from Prevent Blindness America to Johns Hopkins University. We offer our appreciation to the investigators:

Principal Investigator **David S. Friedman, MD, MPH**
Assistant Professor of Ophthalmology
Wilmer Eye Institute
Johns Hopkins University

Co-investigators **Nathan Congdon, MD, MPH**
Assistant Professor of Ophthalmology
Wilmer Eye Institute
Johns Hopkins University

John Kempen, MD, PhD
Assistant Professor of Ophthalmology
Wilmer Eye Institute
Johns Hopkins University

James M. Tielsch, PhD
Professor
Bloomberg School of Public Health
Johns Hopkins University

Dr. Tielsch also serves on the board of directors of Prevent Blindness America and was project leader for this publication.

The investigators were assisted by staff at ORC Macro International, including:

Benita J. O'Colmain, MPH, PhD
Wanda Parham, MPA
Arlen Rosenthal, MA
Adrienne Y. Semidey, MA
Sandra Townsend
Ceres Wright, BS

Text written by **John A. Shoemaker**

2008 Updates to the Fourth Edition provided by:

| | |
|--|--|
| Kevin D. Frick, PhD Associate Professor Bloomberg School of Public Health Johns Hopkins University | Christine S. Spencer, ScD Associate Professor School of Public Affairs University of Baltimore |
|--|--|

Cover design
donated by **Saatchi & Saatchi Healthcare**

Illustrations **Soumya Netrabile**



National Eye Institute
2020 Vision Place
Bethesda, MD 20892-3655
(301) 496-5248
www.nei.nih.gov



Prevent Blindness America
211 West Wacker Drive
Suite 1700
Chicago, Illinois 60606
800-331-2020
www.preventblindness.org